

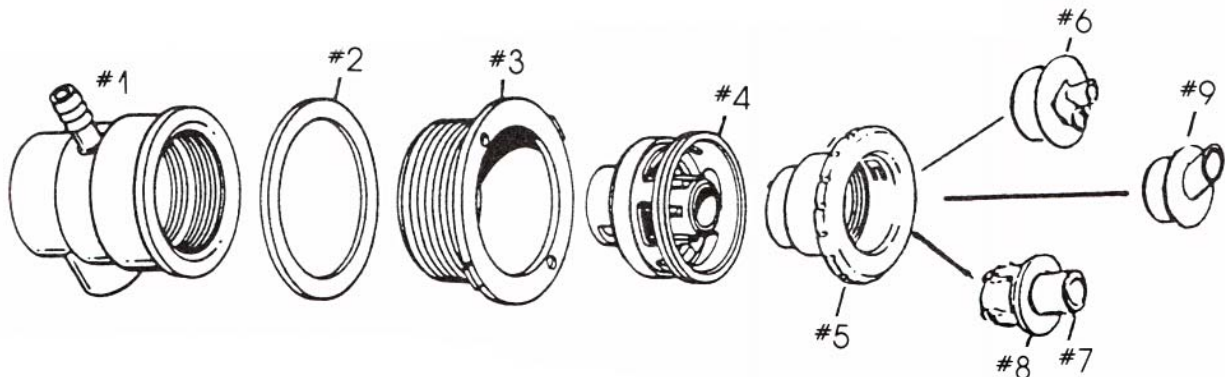
## MAGNA'FLOW MANIFOLD JET INSTRUCTIONS

The correct hole size for the Magna'flow Manifold jet is 2 5/8".

1. Before drilling the hole(s) to install the jet(s), make sure mounting surface is flat. This will help assure the best seal.
2. Drill one 2 5/8" hole for each jet.
3. The gasket (#2) can be placed on the inside or outside surface. Make sure surface is smooth enough to seal.
4. Before inserting the wall fitting (#3) thru the hole, apply silicone to threaded area of wall fitting only. This will help seal the wall fitting (#3) and jet (#1) together.
5. Tighten wall fitting (#3) into jet (#1) hand tight (10 FOOT POUNDS MAX ALLOWED) with gasket (#2) in place. The gasket (#2) and silicone will create a good seal.

**CAUTION:** DO NOT APPLY ANY SILICONE INSIDE THE JET. THIS WILL INTERFERE WITH THE OPERATION OF THE JET.

6. After the jets are installed on spa, connect the plumbing. Be sure air line is connected to barb and water line is placed in socket. Use care when applying cement inside slip socket of the jets. If too much cement is used, it may be pushed up inside jet housing causing poor jet performance.
7. Be sure air lines do not sag. If air lines sag, the jets may not aerate properly.
8. Run spa for fifteen minutes to clear debris from water lines, then thread nozzle assembly (#4) into place using a 9/16" nut driver. Make sure nozzle assembly is threaded snugly into place.
9. Slip adjustment handle (#5) through wall fitting (#3) lining up ribs on side of nozzle assembly (#4) with cut-outs at base of adjustment handle (#5). Press adjustment handle (#5) firmly into place. Clips must snap into place.
10. Insert therapy option into adjustment handle (#5). Pressing firmly to snap into place. To remove, pull on snout of eyeball (or flowpath spout). **Note:** It may be easier to remove therapy option with pump running. Block outlet with index finger and pull on snout of eyeball or flowpath spout.
11. Rotate adjustment handle (#5) 90° to control flow of water.



#1	3/4" x 3/8" MANIFOLD JET BODY	10-4570	#6	DUAL PORT PATHFLOW	10-4820
#2	AFII GASKET	10-5847	#7	EYEBALL	10-4503
#3	WALL FITTING	10-4801	#8	CAGE	10-4806
#4	NOZZLE ASSEMBLY	10-4804	#9	SINGLE PORT PATHFLOW	16-4821
#5	ADJUSTMENT HANDLE OR SL ADJUSTMENT HANDLE	10-4802 10-4702			