

Put the WOW® in your bath tub everytime



## TheWOW®

Powerful. Compact. Proven Reliability.

- Ultra Quiet Operation and Proven Reliability
- Compact Design and Easy to Install
- UL and CSA Approved
- Self-draining Volute Ensures a Dry, Clean System
- Air or Electronic Switch Controls Available



**BALBOA**  
water group

# TheWOW® BathPump

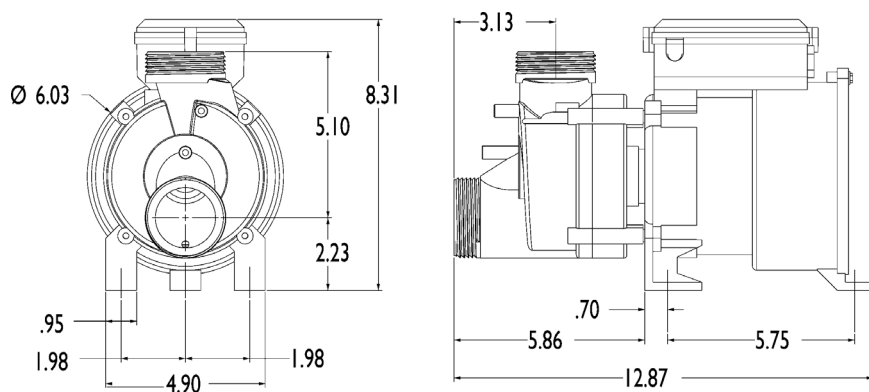
The WOW® (Whirlpool Operating Wonder) from Balboa Water Group is the greatest little bath pump ever built! Revolutionizing the industry, the standard to which all pumps are compared, making the whirlpool tub affordable for every homeowner.

The WOW® is the most reliable bath pump on the market. The WOW® pump has years of reliable operation with less than 0.1% failure rate and it's backed by the service and reputation of Balboa Water Group.

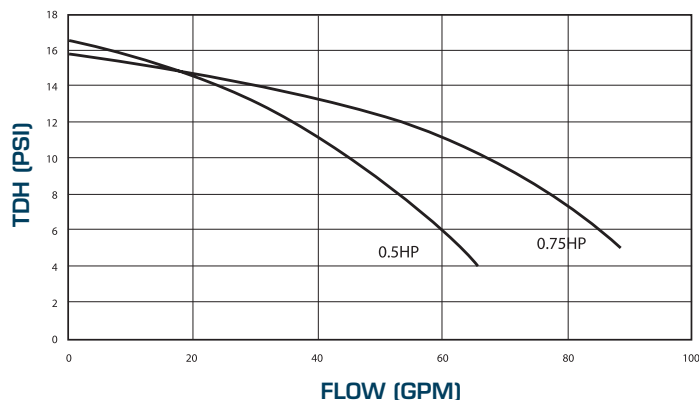
The WOW® is compact in size and easy to install. The self-draining volute ensures a dry, clean system.

The WOW® offers quiet operation, adding to the tranquil and comforting hydrotherapy experience. UL and CSA approved, the WOW® had passed rigorous agency testing.

Reliability, compact design, and quiet power - are the reasons the WOW® has become the standard by which all other luxury whirlpool pumps are measured.



**60Hz PERFORMANCE CURVE North America Model**



## FEATURES

- Single Speed Model
- Ultra Quiet Operation
- Compact Design
- UL and CSA Approved
- Self-draining Volute
- Proven Reliability

## OPTIONS

- Wetends are Front, Front Top, Center
- 65 and 86 GPM Flow Rate
- 115 Voltage
- 5.5 and 7.5 Amp
- Frequency of 60Hz
- NEMA Plug and Bare Leads
- Air Switch
- 30 min. Electronic Switch Timer

## SPECIFICATION

- Sizes . . . . . 1/2 HP, 5.5 Amp  
3/4 HP, 7.5 Amp
- Frequency . . 60 Hz
- Switches . . . Air Electronics
- Cords . . . . . Bare Leads MENA Plug
- Wetends. . . . Front, Front Top, Center
- Timers. . . . . 20 min Air Switch  
30 min Elect Switch

Plumbing configuration effects pump performance. Engineering consultation is available to find the best pump for all your bath needs.

### 5.5 Amperage (North America Domestic)

MATERIAL #	FLOW RATE (GPM)	VOLTAGE	AMP	VARIABLE & 1 SPEED	NEMA CORD (PLUG)	AIR SWITCH	ELECTRIC TIMER	FRAME SIZE	FREQUENCY	BULK QTY
1010030	65	115	5.5	1	Yes	No	No	10	60 Hz	75
1050030	65	115	5.5	1	Yes	No	No	10	60 Hz	1
1010031	65	115	5.5	1	Yes	Yes	No	10	60 Hz	75
1050031	65	115	5.5	1	Yes	Yes	No	10	60 Hz	1
1050036	65	115	5.5	1	Yes	No	30	10	60 Hz	75
1024004	-	120	5.5	1	Yes	Yes	No	10	60 Hz	1

### 7.5 Amperage (North America Domestic)

MATERIAL #	FLOW RATE (GPM)	VOLTAGE	AMP	VARIABLE & 1 SPEED	NEMA CORD (PLUG)	AIR SWITCH	ELECTRIC TIMER	FRAME SIZE	FREQUENCY	BULK QTY
1010037	86	115	7.5	1	Yes	No	No	10	60 Hz	75
1050037	86	115	7.5	1	Yes	No	No	10	60 Hz	1
1010032	86	115	7.5	1	Yes	Yes	No	10	60 Hz	75
1050032	86	115	7.5	1	Yes	Yes	No	10	60 Hz	1
1010038	86	115	7.5	1	Yes	No	30	10	60 Hz	75
1050038	86	115	7.5	1	Yes	No	30	10	60 Hz	1

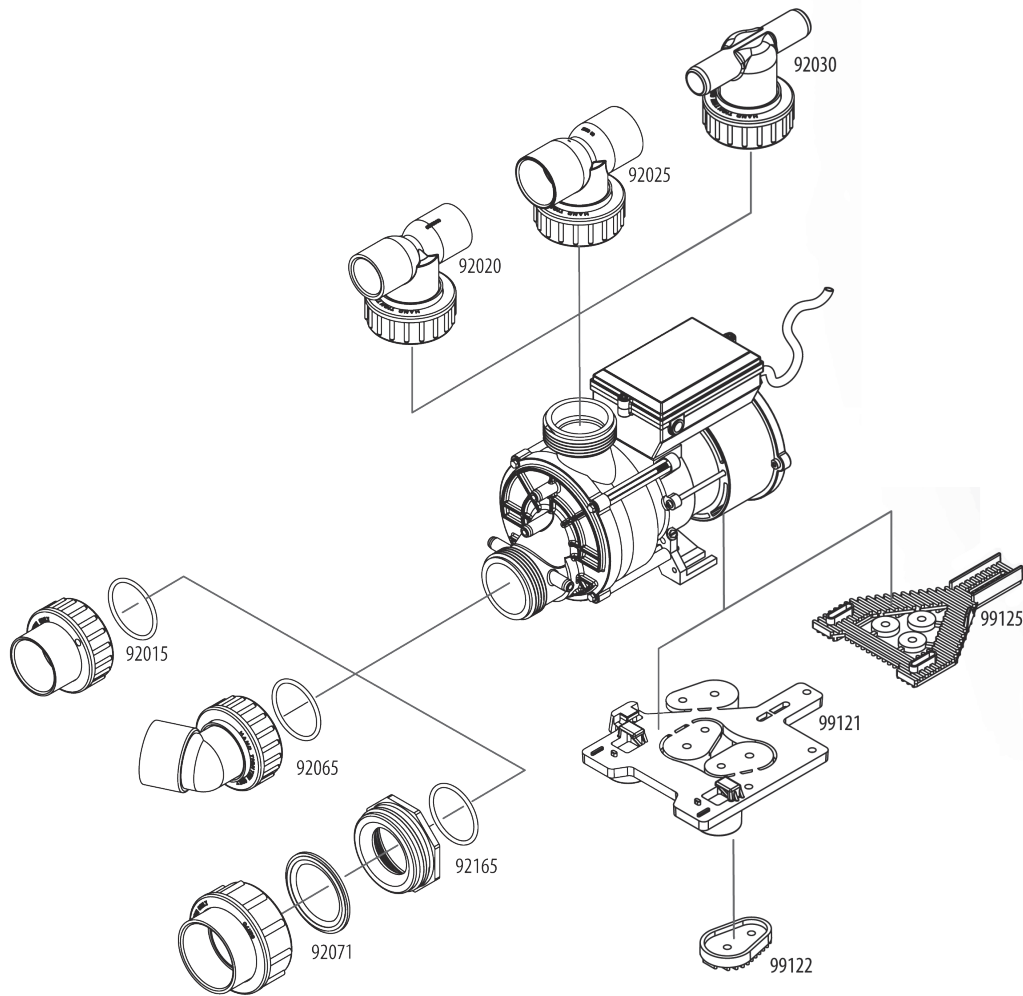
Timer Models: Models with a 30 min. timer require top side panel model 5011028XXX. The XXX is for color representation.



### Wetend (Bottom Suction, Top Discharge)

MATERIAL #	FLOW RATE (GPM)	VOLTAGE	AMP	VARIABLE & 1 SPEED	FRAME SIZE	FREQUENCY
1215163	65	115	5.5	1	10	60 Hz
1215164	65	230	2.0	1	10	50 Hz

## Pump Accessories Installation Instruction



### Wetend (Bottom Suction, Top Discharge)

MATERIAL #	DESCRIPTION
92015	UNION 1.5" QUICK DISCONNECT
92015M	50MM SLIP UNION WITH O-RING
92020	1" SLIP SWEEP TEE UNION WITH O-RING
92020M	32MM SLIP SWEEP TEE UNION WITH O-RING
92025	1.25" SLIP SWEEP TEE UNION WITH O-RING
92030	26MM SWEEP TEE UNION WITH O-RING
92065	65° UNION, 1.5" SLIP WITH O-RING
92065M	65° UNION, 50MM SLIP WITH O-RING
92071	2" SLIP UNION WITH GASKET
92165	2" OD X 1.5" ID BUTTRESS THREAD ADAPTOR WITH O-RING
99121	UNIVERSAL PUMP STAND
99122	ANTI-VIB (SET OF 3 PADS)
99125	PUMP ANTI VIB PAD FOR OLY PUMP

WOW0216

©2016 Balboa Water Group. All rights reserved. Your Single Source Solution.  
 1382 Bell Avenue | Tustin, CA 92780 | p 714.384.0382 | www.balboawatergroup.com

Balboa have the right to change technical data without further notice.

**BALBOA**  
 water group